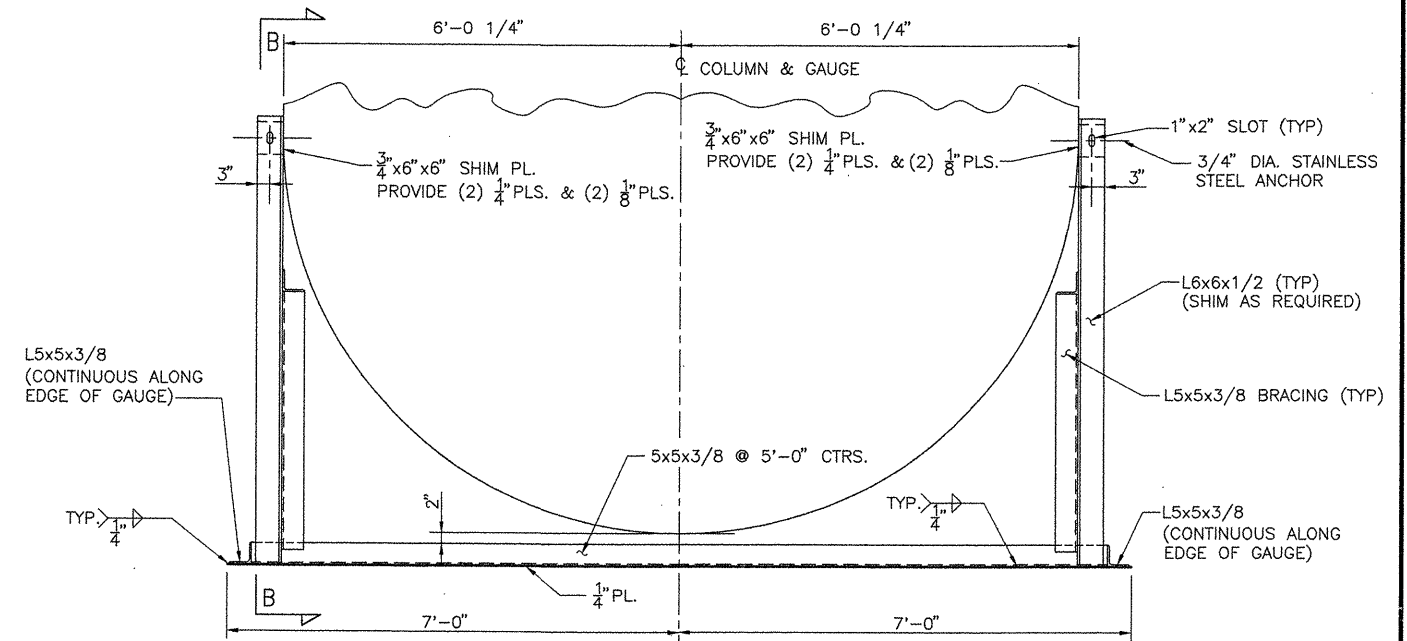
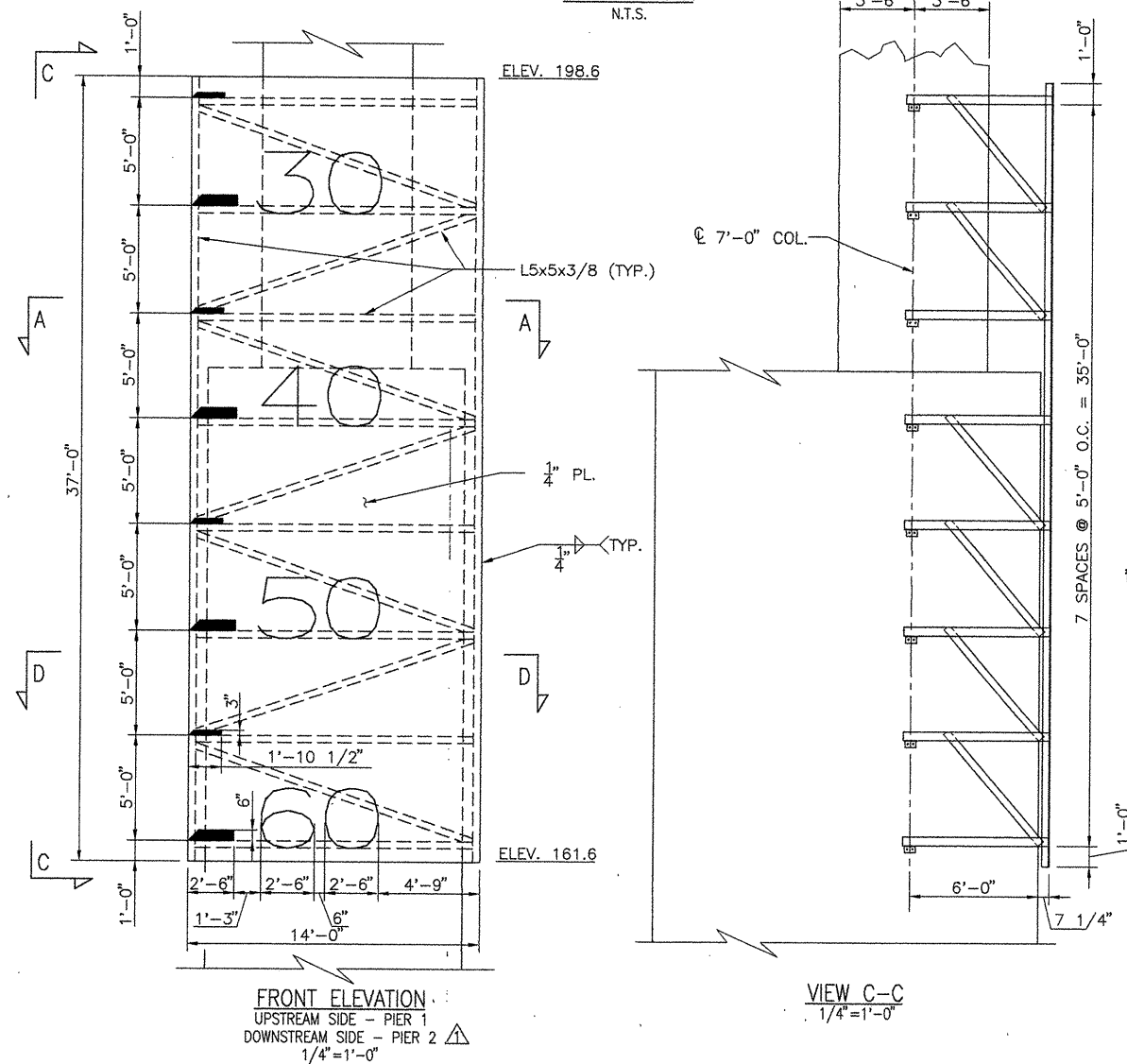


COMPANY\1999 JOBS\99-044 AHTD\WHITERIVER\JOB 110394\c1rgaged1&2



SECTION A-A
N.T.S.

SECTION D-D
N.T.S.



① REVISED PIER NOS.
6-3-2010

NUMERALS ON CLEARANCE GAUGES SHALL BE 3 FEET HIGH, SERIES E, AS SHOWN IN STANDARD ALPHABETS FOR HIGHWAY SIGNS* PUBLISHED BY THE FEDERAL HIGHWAY ADMINISTRATION, U.S. DEPARTMENT OF TRANSPORTATION.

ALL STRUCTURAL STEEL SHALL CONFORM TO ASTM M270, GR.36 AND SHALL BE FABRICATED ACCORDING TO SECTION 807 OF THE STANDARD SPECIFICATIONS. THE 1/4" PLATE AND SUPPORT BRACING SHALL BE CLEANED IN ACCORDANCE WITH SUBSECTION 807.84(B). THE FINISH COAT SHALL BE WHITE. THE PAINT FOR THE NUMERALS AND THE FOOTMARKS SHALL BE BLACK. ALL COATS OF PAINT WILL BE APPLIED IN THE SHOP. PAINTING SHALL BE IN CONFORMANCE WITH SUBSECTION 807.75 OF THE STANDARD SPECIFICATIONS. SEE SP JOB 110394 "CLEARANCE GAUGES" FOR METHOD OF MEASUREMENT AND PAYMENT.

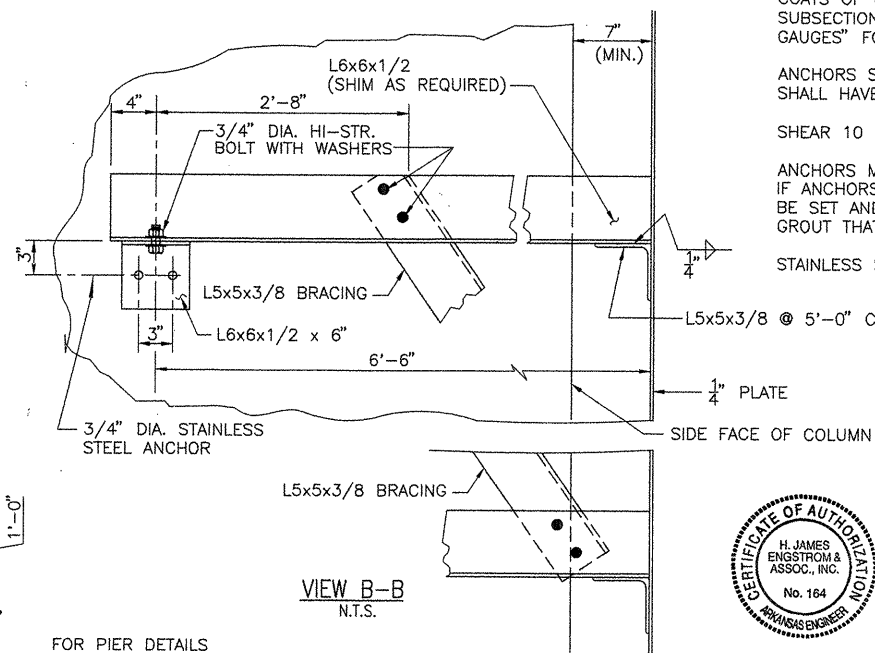
ANCHORS SHALL BE INSTALLED ACCORDING TO THE MANUFACTURER SPECIFICATIONS AND SHALL HAVE THE FOLLOWING ULTIMATE CAPACITIES.

SHEAR 10 KIPS.

TENSION 9 KIPS.

ANCHORS MAY BE CAST INTO PLACE OR DRILLED AND GROUTED INTO PLACE. IF ANCHORS ARE DRILLED AND GROUTED INTO PLACE, THE ANCHORS SHALL BE SET AND FIXED USING A QPL APPROVED EPOXY OR NON-SHRINK GROUT THAT COMPLETELY FILLS THE HOLES.

STAINLESS STEEL SHALL CONFORM TO ASTM A193 OR A320, GR. B 8.



VIEW B-B
N.T.S.

FOR PIER DETAILS
SEE DWG. NO. 41976 & 41977

CLEARANCE GAUGE TO BE INSTALLED BEFORE
ERECTION OF SUPERSTRUCTURE BEGINS.

1 Revised Pier Nos. By AHTD 6-3-2010 Checked MM/HJE

ALTERNATE NO.1 & 2
WHITE RIVER BRIDGE

DETAILS OF CLEARANCE GAUGES

WHITE RIVER STR. & APPRS.
(CLARENDON) (PH II) (F)
MONROE COUNTY

ROUTE 79 SEC. 13

ARKANSAS STATE HIGHWAY COMMISSION
LITTLE ROCK, ARK.

Engstrom/Modjeski and Masters, Inc.

DRAWN BY: CJA DATE: Nov. 07 FILENAME: b110394_g4
 CHECKED BY: GPT DATE: Nov. 01 SCALE: 1/4"=1'-0"
 DESIGNED BY: YO DATE: Nov. 01
 BRIDGE NO. 06830 DRAWING NO. 42017

BRIDGE ENGINEER